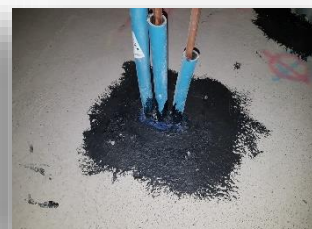
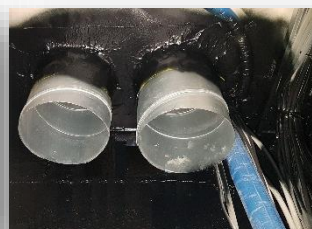


# BLOWERPROOF® LIQUID BRUSH



## Paint-on airtight membrane and intelligent vapour control BBA Certified and Passive House Certified



### DESCRIPTION & USE

BLOWERPROOF® LIQUID BRUSH dries to form a flexible airtight membrane with strong adhesion to the substrate, and also serving as an intelligent vapour control. BLOWERPROOF® LIQUID BRUSH is applied with a paintbrush.

Suitable substrates include concrete, masonry, bricks, blocks, plaster/render, engineered wooden boards, tapes, membranes, aluminium, steel and PVC.

BLOWERPROOF® LIQUID BRUSH is a water-based dispersion without organic solvents. Dried material can be disposed of as non-hazardous waste.

BLOWERPROOF® LIQUID BRUSH is used for the permanent airtightness of the following building parts:

- Floor/wall, wall/wall and wall/ceiling connections or complete walls.
- Pipe penetrations and window jambs
- (Curtain) walls
- Wall/roof connections (steel deck)

### ADVANTAGES

- BLOWERPROOF® LIQUID brush is certified as permanent airtightness, intelligent vapour control by the BBA and the Passive House Institute.
- The intelligent vapour control characteristic of BLOWERPROOF® LIQUID prevents moisture migration into the applied surface (Sd: 20 - 30) however allows excess humidity to escape (BBA).

### APPLICATION METHOD






#### PREPARATION

- Standing water, dust and loose particles are removed with a vacuum cleaner. BLOWERPROOF® LIQUID BRUSH may be applied to humid (damp) surfaces.
- Fill holes and gaps bigger than 5mm with non-shrink gap-filling mortar or non-shrink polyurethane foam. When using polyurethane foam, cut off excess after hardening.
- Apply Primer 43 on those mineral surfaces which are highly absorbent or which have low water resistance; on new plasterboards, on dusty surfaces or when applying in temperatures > 25°C.

#### APPLICATION METHOD

- Apply BLOWERPROOF® LIQUID BRUSH with a flat synthetic bristle paintbrush in 1 or 2 layers. Consumption: 0.5kg/m<sup>2</sup> to 1kg m<sup>2</sup> or about 500 to 1000 microns to be verified with a thickness gauge. BLOWERPROOF® LIQUID can be applied both on dry and humid (damp) surfaces. Apply the second layer after the first has fully dried.
- The product should be well worked in using a smearing action to ensure continuous unbroken coverage.
- Avoid (local) layer thickness of > 5mm such as in joints/openings or pock marks.
- Apply over an area sufficient to overlap finish plaster or render by 50mm; in all cases apply a minimum of 50mm above DPC at ground level.
- During the drying process, BLOWERPROOF® LIQUID BRUSH will change colour from blue to black. When fully black BLOWERPROOF® LIQUID BRUSH has dried out and is ready to accept specified finish. BLOWERPROOF® LIQUID BRUSH is also available in white colour. This product type does not show a colour change when drying. Hence, consider a drying time of 2 to 6 days depending on humidity, (lack of) ventilation and surface temperature. (based on wet layer thickness – WLT – of 0,5 to 1 kg/m<sup>2</sup>).

## CHARACTERISTICS

INSTITUTE	TEST	STANDARD	VALUE/RESULT	
	System certification: airtightness of building connections.	Passive House	PASS: COMPONENT A AIR PERMEABILITY: 0,04 m <sup>3</sup> /(hm <sup>2</sup> )	
	Product certification: permanent airtightness and intelligent vapour barrier.	BBA	PASS	
	Expected durability: lifetime of the construction			
	Resistance to fatigue movement	EOTA TR008:2004	PASS	
	Elongation after ageing	BS EN ISO 527-3	262,7%	
	Damp diffusion resistance factor	EN ISO 12572 (2001)	Sd: 11,5 meter – G: 57,5 M.N. s/g ( $\mu = 35967, 0,6$ kg consumption)	
	Watertightness	EN 14891	Pass	
	Adhesion on red brick (dry)	ISO4624 (2002) <i>Values after artificial ageing of sample membrane</i>  <i>Tests realized by BBRI</i>	> 1 N/mm <sup>2</sup>	
	Adhesion on red brick (moist)		> 1 N/mm <sup>2</sup>	
	Adhesion on concrete brick (dry)		> 1 N/mm <sup>2</sup>	
	Adhesion on concrete brick (moist)		> 1 N/mm <sup>2</sup>	
	Adhesion on calcium silicate stone (dry)		Adhesion value exceeding substrate strength	
	Adhesion on calcium silicate stone (moist)		Adhesion value exceeding substrate strength	
	Adhesion on PVC		0,8 N/mm <sup>2</sup>	
	Adhesion on aluminium		> 1 N/mm <sup>2</sup>	
Adhesion on EPDM (Tridex)	> 1 N/mm <sup>2</sup>			
Adhesion on roofing	Adhesion value exceeding substrate strength			
Adhesion of spray plaster (knauf MP75) on Blowerproof Liquid	Adhesion value exceeding substrate strength			
	Flame propagation Fire reaction		EN ISO 11925	PASS
	Free from VOC, TVOC, carcinogenics, ammonia, formaldehyde		EN ISO 16000-9/6 EN 717-1 EN ISO 16000-28	

- Consumption: 0,5 to 1 kg/m<sup>2</sup> (depending substrate)
- Ambient and substrate surface temperature during application and drying: > 5°C.
- Density: +/- 1,15 kg / litre
- Available colours:
  - blue (drying to black airtight coating)
  - white (drying to white airtight coating)
- Drying time: 4 to 48 hours depending on substrate temperature, air humidity, applied layer thickness and ventilation.
- Storage: 5 – 20 °C; stored dry, out of direct sunlight; conservation: 12 months from date of production, original unopened packaging.

## PACKAGING

- 5 kg pails – pallet : 96 x 5 kg
- 300 gram cartridges – box: 12 cartridges

## SAFETY

Consult the Safety Data Sheet prior to application. Work in ventilated areas.

DATE OF THIS EDITION: 02/12/2019 - Our general conditions of sale apply. This document does not have a contractual value. This technical data sheet replaces and annuls the previous edition. The information given in this sheet has the purpose to inform and advice you. At every moment, this sheet can be adapted because of technical evolution. All information is given in good faith and without any warranty. The application, use and processing of these products are beyond our control and therefore the entire responsibility of the user/client/applicator. The user of the product must test the product's suitability and apply for the intended purpose. Established liability if any for any reason is always limited to the value of the goods supplied by HEVADEX bvba. The products and systems are manufactured under total quality management. HEVADEX bvba reserves the right to change the properties of its products. Users must always refer to the most recent issue of the local Product Data Sheet, copies of which will be supplied on request.

Distributed by: Blowerproof Ireland Ltd. – Phone: 0404 61901 - info@blowerproof.ie – www.blowerproof.ie

Page 2 of 2